



REPLY TO  
ATTENTION OF:

DEPARTMENT OF THE ARMY  
US ARMY INSTALLATION MANAGEMENT COMMAND, PACIFIC REGION  
HEADQUARTERS, UNITED STATES ARMY GARRISON, HAWAII  
851 WRIGHT AVENUE, WHEELER ARMY AIRFIELD  
SCHOFIELD BARRACKS, HAWAII 96857-5000

JUL 31 2012

IMPC-HAW-ZA

MEMORANDUM FOR All Soldiers, Department of the Army (DA) Civilians, Department of Defense (DoD) Contractors, Family Members, and Visitors within US Army Garrison, Hawaii (USAG-HI) Installations

SUBJECT: Policy Memorandum USAG-HI-1, Authorized Schofield Barracks, Wheeler Army Airfield, Fort Shafter, and Tripler Army Medical Center Physical Training (PT) Running Routes and Pedestrian's Rights and Duties

1. References.

- a. AR 350-1, Army Training and Leader Development, 4 Aug 11.
- b. TC 3-22.20, Army Physical Readiness Training, 20 Aug 10.

2. Applicability. Soldiers, Department of the Army (DA) Civilians, Department of Defense (DoD) Contractors, Family Members, and visitors who are pedestrians or conduct PT on USAG-HI installations.

3. Policy. Active participation in a physical fitness program enhances ones quality of life, improves productivity, and brings about positive physical and mental changes.

a. Physically fit Soldiers are essential to the Army and have a direct impact on their combat readiness. While full and active participation by all Soldiers in structured and individual PT programs is strongly encouraged and supported, adherence to the policies and procedures is required. Military personnel participating in PT will observe the following:

(1) Commanders may hold PT formations within their unit area (e.g., quads) prior to 0630; however, movement from those areas and the calling of cadence will not begin prior to 0630.

(2) Personnel responsible for conducting PT running formations must ensure unauthorized roadways and streets are not used, and designated roads and streets are utilized when necessary. Commanders should contact the Directorate of Emergency Services for guidance or clarification.

(3) Soldiers will observe and comply with approved running routes as shown on the enclosed maps. As indicated, there are no PT routes in any housing areas.

IMPC-HAW-ZA

SUBJECT: Policy Memorandum USAG-HI-1, Authorized Schofield Barracks, Wheeler Army Airfield, Fort Shafter, and Tripler Army Medical Center Physical Training (PT) Running Routes and Pedestrian's Rights and Duties

(4) Running in parking lots is not permitted unless specifically designated and secured.

(5) Soldiers will not use vulgar or derogatory cadence or language at any time.

(6) When jogging along main thoroughfares, streets, and other areas where housing is located on both sides of the street, the calling of cadence will not occur unless a written exception is granted from the Commander, US Army Garrison, Hawaii.

(7) Running formations will not exceed 3 files, nor will the formation extend over the centerline of the road. This includes the cadence caller and the formation leader.

(8) Safety personnel/road guards will be placed at the front and rear of each formation and will wear protective orange-blazer vests or reflective belts. During periods of darkness, safety personnel will carry flashlights or light batons.

(9) Troop columns marching on vehicular roads at night will be marked at both the head and rear of the column by guards with flashlights or other suitable lighting devices. These guards will maintain sufficient distance from the column to ensure ample warning to vehicle drivers.

(10) Foot troop columns have the right-of-way over all traffic, and will march on the right side of the roadway.

(11) During PT, runners must completely clear the roadways when emergency vehicles, responding to an emergency with flashing lights, are approaching.

Units marching in formation on streets will march as close to the curb as possible, with commanders or leaders on the right file, or at the head or rear of the column.

(12) Units will maintain a minimum distance of 25 yards between elements.

(13) Units will normally cross roads by means of flanking movements, except at intersections, to minimize interference with traffic.

b. Joggers/runners running on their own and pedestrians will observe the following:

(1) No more than two people running abreast on sidewalks or authorized roadways.

IMPC-HAW-ZA

SUBJECT: Policy Memorandum USAG-HI-1, Authorized Schofield Barracks, Wheeler Army Airfield, Fort Shafter, and Tripler Army Medical Center Physical Training (PT) Running Routes and Pedestrian's Rights and Duties

(2) Where sidewalks are not provided, when using authorized roadways, stay to the left side of the roadway or shoulder facing oncoming traffic which may approach from the opposite direction.

(3) All personnel will wear a reflective vest or belt during limited visibility to include hours of darkness while running or jogging on the installation. The vest or belt must be visible from the front and rear and unobstructed by clothing or equipment.

(4) Joggers/runners and pedestrians must yield the right-of-way to all vehicles.

c. All motorists will adhere to posted speed limit signs and passing troop formations at 10 MPH.

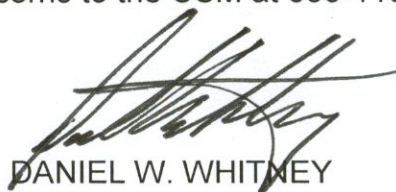
d. When any vehicle stops at a marked crosswalk or at any unmarked crosswalk at an intersection to permit joggers/runners and pedestrians to cross the roadway, the driver approaching from the either direction will not pass the stopped vehicle.

e. This policy will not apply to Morale/Welfare/Recreation sponsored running events. These events will be coordinated and planned to ensure the safety of all participants.

4. This policy supersedes Policy Memorandum USAG-HI-1, SAB dated 14 Jul 10 and remains in effect until cancelled or superseded in writing.

5. Proponent. The proponent for this policy is the USAG-HI Command Sergeant Major (CSM). Please direct any questions or concerns to the CSM at 656-1153.

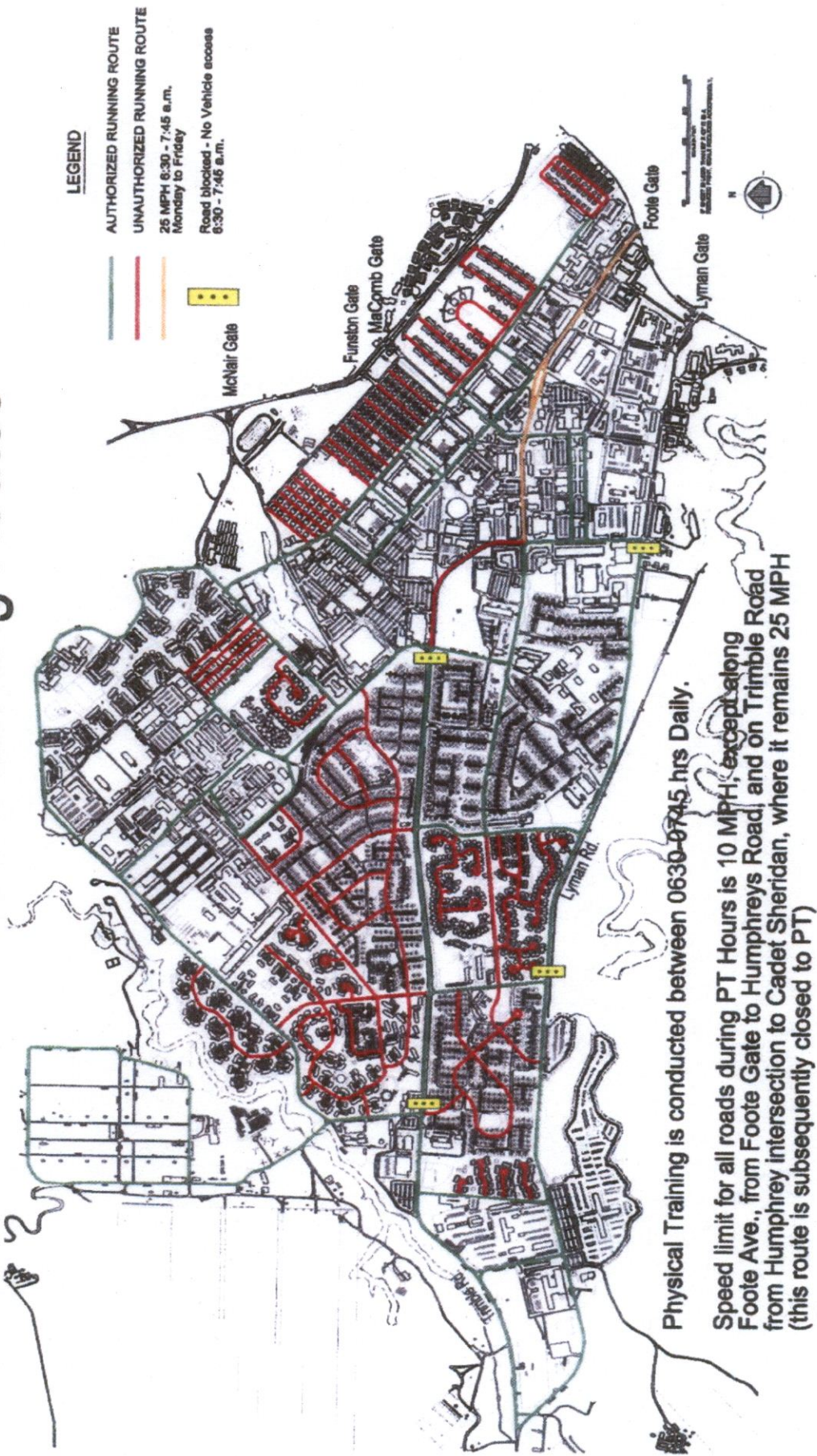
Encl  
as



DANIEL W. WHITNEY  
COL, SF  
Commanding

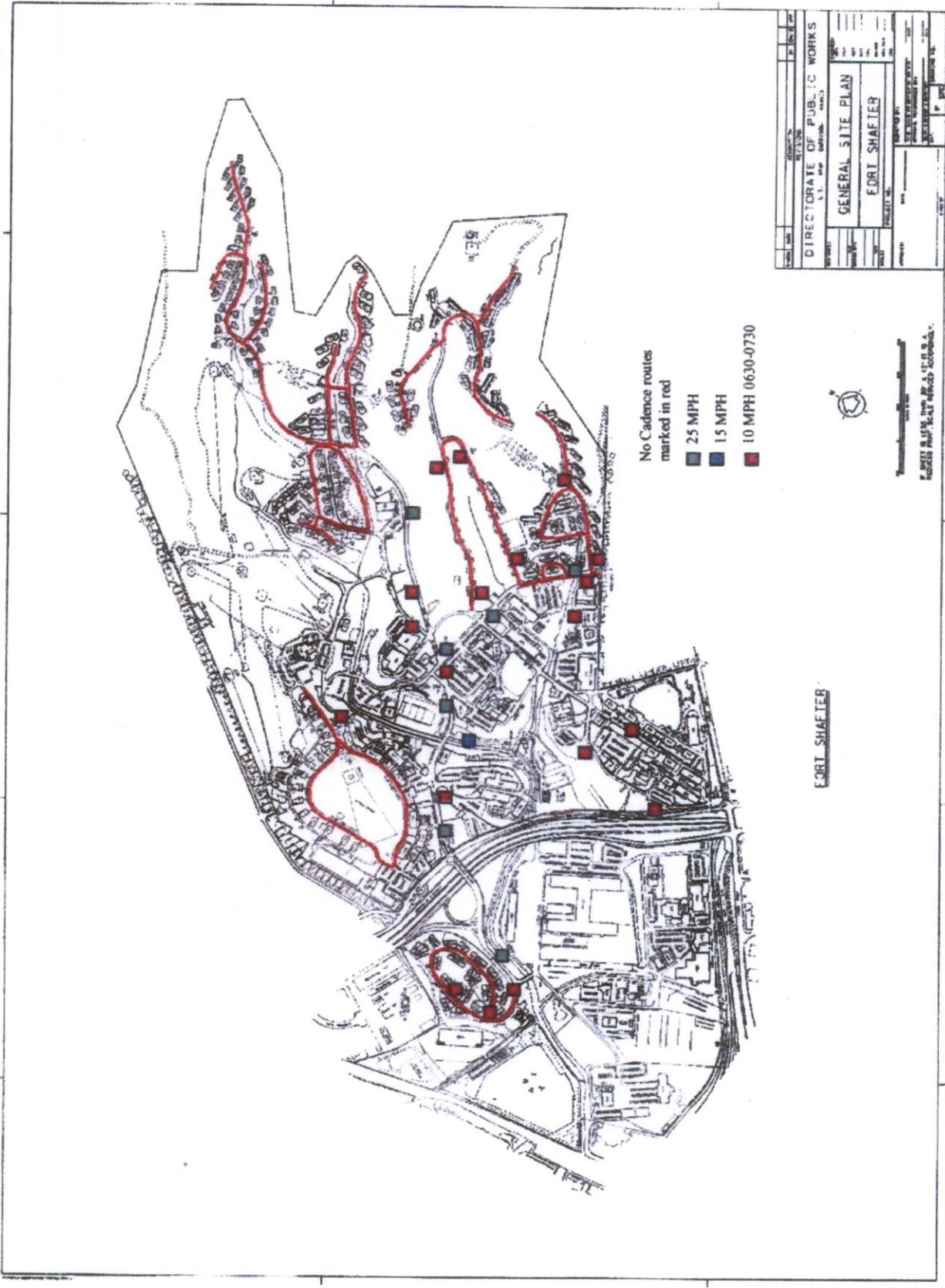
DISTRIBUTION  
Electronic Media

# Schofield Barracks Running Routes



Physical Training is conducted between 0630-0745 hrs Daily.

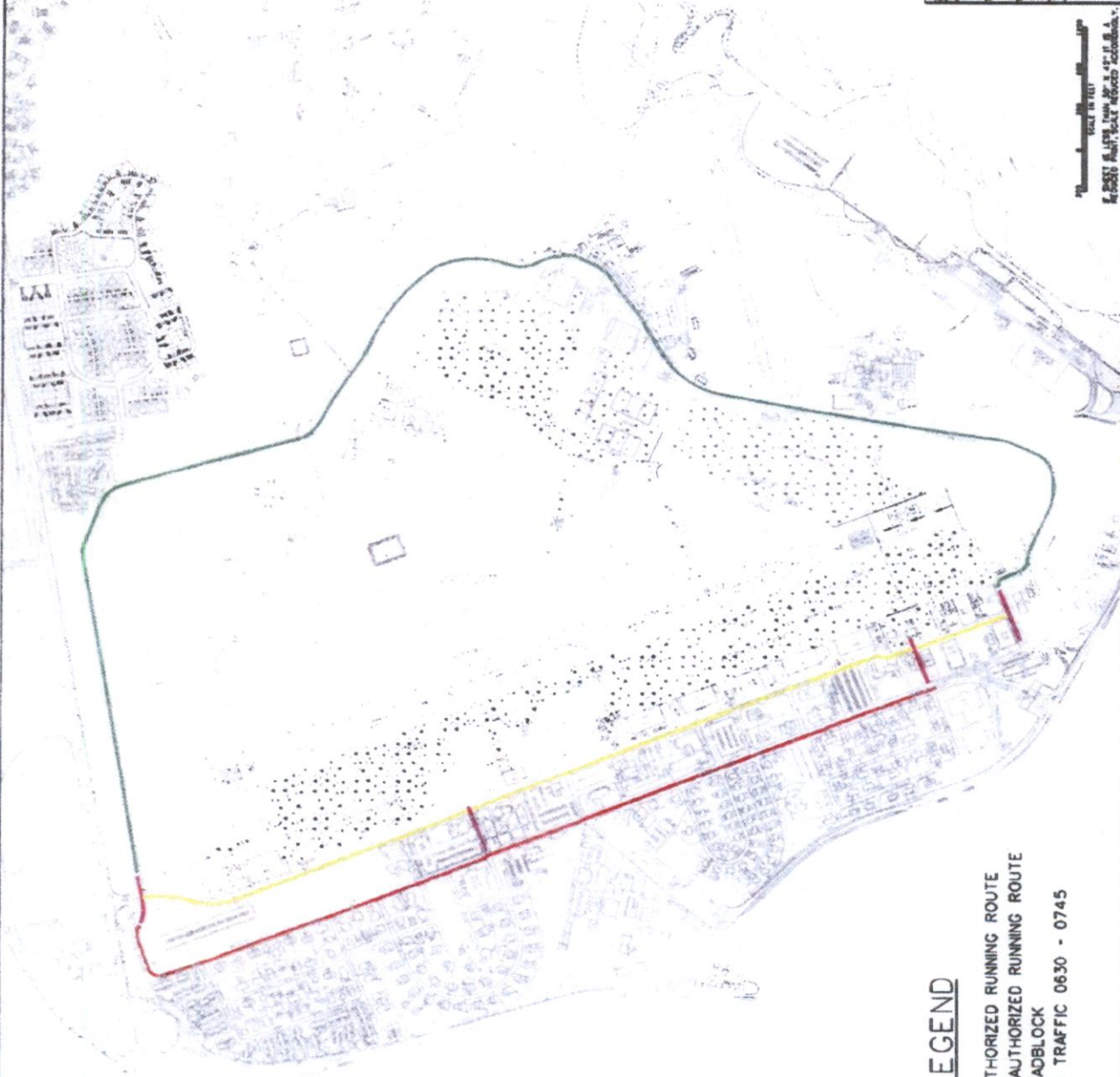
Speed limit for all roads during PT Hours is 10 MPH, except along Foote Ave., from Foote Gate to Humphreys Road, and on Trimble Road from Humphrey intersection to Cadet Sheridan, where it remains 25 MPH (this route is subsequently closed to PT)



FORT SHAFTER

DATE	NOV 1964	BY	W. B. W.
PROJECT	DIRECTORATE OF PUBLIC WORKS		
DESCRIPTION	GENERAL SITE PLAN		
PROJECT NO.	FORT SHAFTER		
SCALE	AS SHOWN		
APP'D	[Signature]		
CHECKED	[Signature]		
DATE	NOV 1964		

DATE	10/15/68	BY	W. J. ...
PROJECT NO.	0630 - 0745	PROJECT NAME	WHEELER ARMY AIRFIELD
<b>DIRECTORATE OF PUBLIC WORKS</b> U.S. ARMY CORP. ENG. 14811			
<b>WHEELER ARMY AIRFIELD</b> <b>RUNNING ROUTES</b>			
APPROVED BY	DATE	DESIGNED BY	DATE
CHECKED BY	DATE	PLANNED BY	DATE



**LEGEND**

- AUTHORIZED RUNNING ROUTE
- UNAUTHORIZED RUNNING ROUTE
- ROADBLOCK
- NO TRAFFIC 0630 - 0745

SCALE IN FEET  
 1" = 2000'  
 1" = 1000'

# RUNNING ROUTES

## TRIPLER ARMY MEDICAL CENTER

NORTH - 2 MILES



SOUTH - 2 MILES



(BOTH ROUTES BEGIN AT  
TAMC PFC)

